

# ***ELETTROTERM***

# **CELISOFT5**

## ***EL35.005***

## ***configuration***

## ***software***



# **CELISOFT5**

# **Manual**

Version 1.0.0

# SOMMARIO

<b>1. Introduction .....</b>	<b>3</b>
1.1 Technical requirements.....	3
1.2 System requirements .....	3
<b>2. Installation .....</b>	<b>4</b>
1. Hardware installation .....	4
2. Software Installation.....	5
<b>3. CELSOFT5 Guide .....</b>	<b>6</b>
3.1 EL35.005 Configuration .....	6
3.2 How to setup signalling SMS .....	8
3.3 How to modify a signalling SMS .....	10
3.4 Save the settings.....	11
3.5 Print the settings .....	11
3.6 Parameter acquisition.....	11
<b>4. Elettroterminal .....</b>	<b>12</b>

# 1. Introduction

## 1.1 Technical requirements

To correctly set up your EL35. 005 you need:

1. EL35. 005 device



2. n°1 RJ45 cable



3. n°1 RJ45 → RS232 DB9F Adapter



4. Personal Computer (PC) / Laptop  
With serial port RS232



## 1.2 System requirements

To install CELSOFT5 the following requirements are need:

1. Operating System

Windows 98, Windows ME , Win2k, Windows XP  
with Internet Explorer 5.0 or advanced

2. Memory

128Mb RAM

3. Free Disk Space

5Mbyte

4. Drive

CD-ROM 4X

## 2. Installation

### 1. Hardware installation

**WARNING!** Before you begin, read carefully the EL35. 005 Manual contained in the CD-ROM.

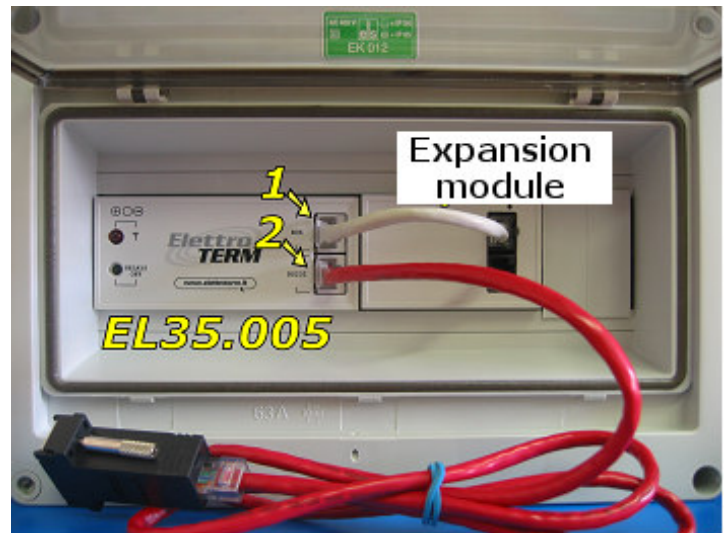
Before installation check to have correctly inserted the SIM CARD in the SIM CARD holder.

Make sure the EL35. 005 is powered off.

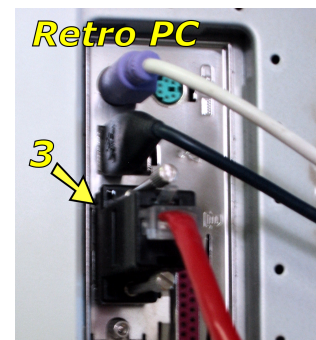
Follow the instructions reported below.

1. Connect by mean of a RJ45 cable an eventual expansion, if it is present.

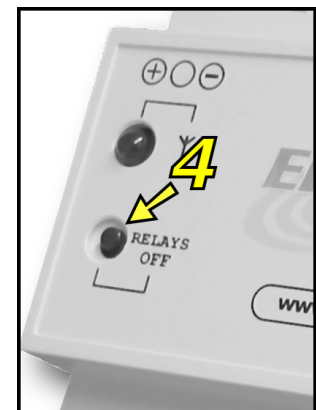
2. Connect one end of an Rj45 cable (a network cable) to the RS232 port on your EL35. 005 front panel



3. Connect the other end of the RJ45 cable (see 2) to a RJ45→DB9F adapter, and connect the adapter to a serial of your PC.



4. Push the relay off push-button, and keep it pushed. Power on the EL35. 005. Hold the push-button in until the status led lights up and the turns off. (For more informations read the EL35. 005 Manual, section "Programming").



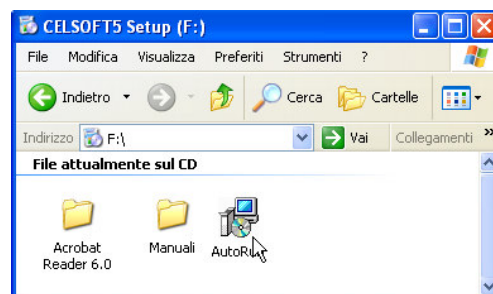
## 2. Software Installation

Steps to follow to install CELSOFT5

1. Insert CELSOFT5 CD-ROM in the CD-ROM drive



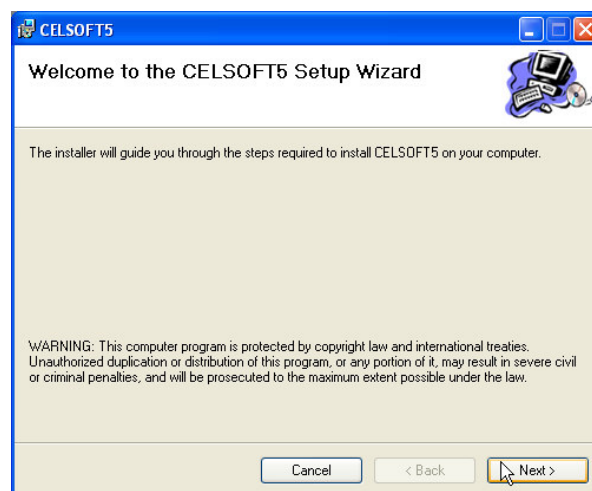
2. If the CD-ROM doesn't start automatically, go to the CD-ROM folder and double-click on Autorun.exe



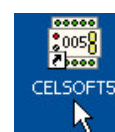
3. Click on setup icon



4. Follow carefully the instructions reported in the CELSOFT5 setup guide



5. At the end of the CELSOFT5 installation procedure an icon will appear on your desktop and in the program menu



## 3. CELSOFT5 Guide

### 3.1 EL35.005 Configuration

**WARNING!** in the order to properly configure the EL35005 it must be in programming mode (see 2.1.4 of this manual, and the EL35. 005 Manual).

Follow the instruction reported below :

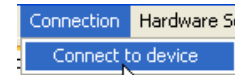
1. Double-click on CELSOFT5 icon.



2. Select the serial port to which the EL35. 005 is connected, and the correct BITRATE, from "Hardware settings" menu.



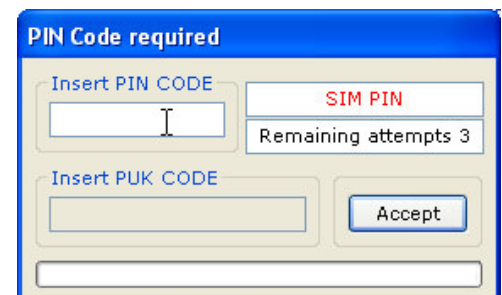
3. Select "Connect to device" from "Connection" menu



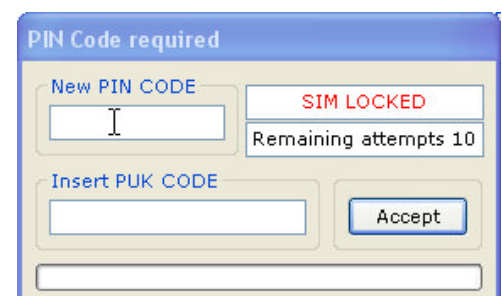
4. If an error message appears in the status bar, control all cablings (Antenna, power supply, etc)

The modem does not answer. Verify the connection.

5. If the SIM CARD is PIN-CODE protected, CELSOFT5 will ask you to insert the code in order to permanently deactivate the protection.



6. After three wrong PIN-CODE insertions, PUK-CODE will be required. If the PUK code is right you must insert a new PIN-CODE



**WARNING!** After ten wrong PUK-CODE insertions, your SIM CARD will be blocked



## 7. Log File

This windows show

- Network registration status
- GSM Network operator
- Network signal quality

## 8. SIM Phone book

The windows shows the first four phone book entries

## 9. Service centre address

The window shows the service centre address through which EL35. 005 originated SMS are transmitted.

## 10. EL35. 005 Configuration

Here you can select the EL35. 005 configuration you're using:

- EL35. 005
- EL35. 005 + one input expansion
- EL35. 005 + two input expansion

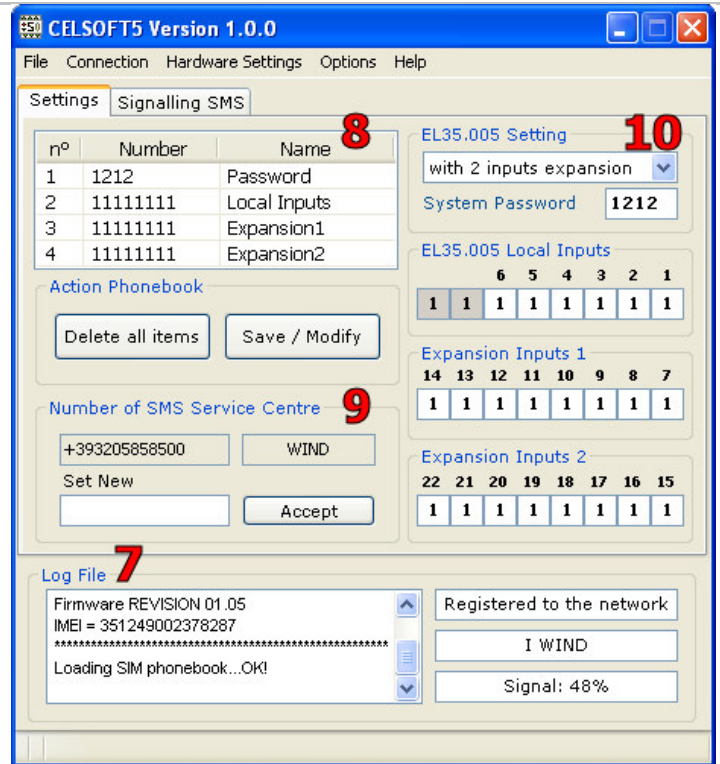
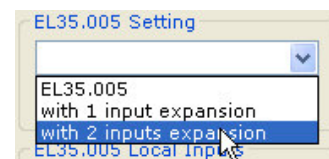


fig. 1



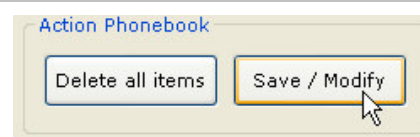
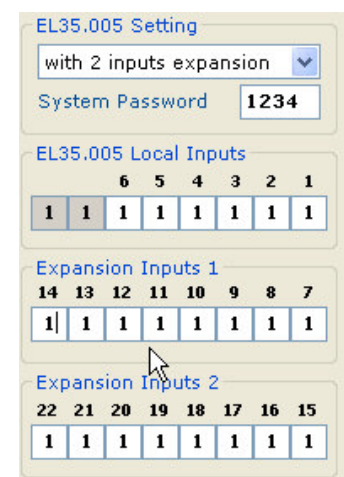
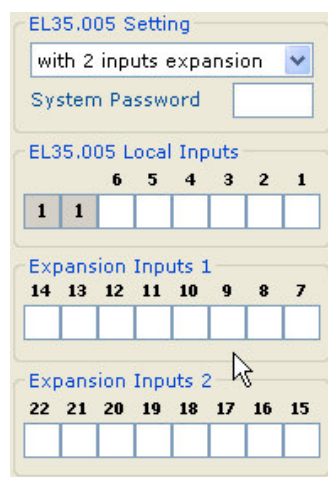
Insert the system password

Insert the inputs configurations  
(input 6 first)

Insert the inputs configurations  
(input 14 first)

Insert the inputs configurations  
(input 22 first)

Click on Save/Modify to save  
settings



## 3.2 How to setup signalling SMS

Follow instructions reported below :

1. Select Signalling SMS TAB

2. Click Import

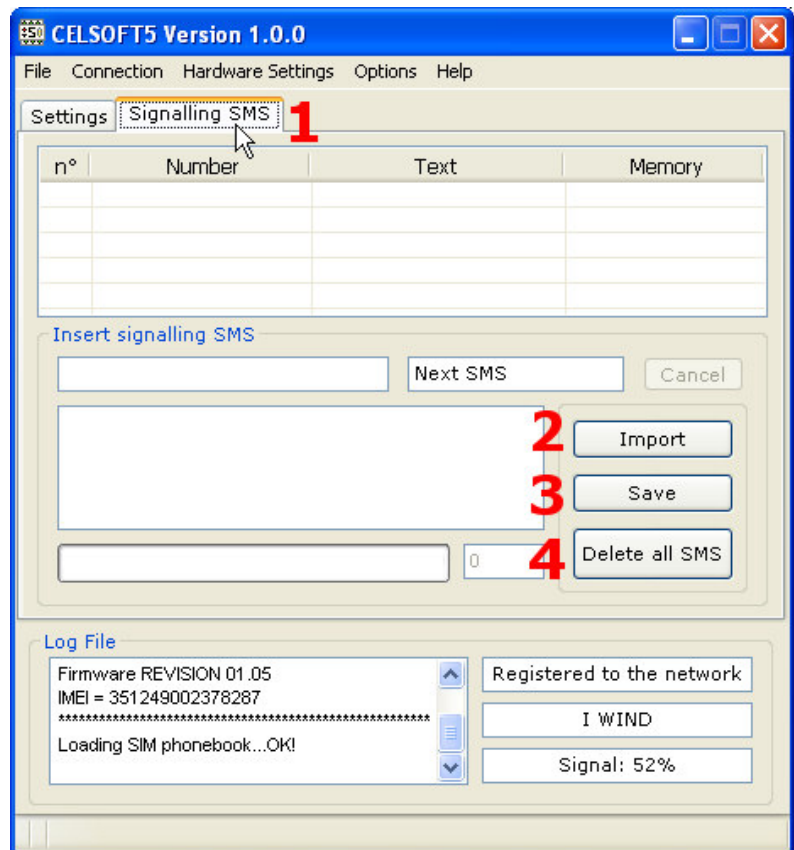
Pushing this button you can list all signalling SMS from store\in SIM-CARD, if present

3. Click Delete all SMS

Pushing this button you can delete all SMS in SIM-CARD

4. Click Save

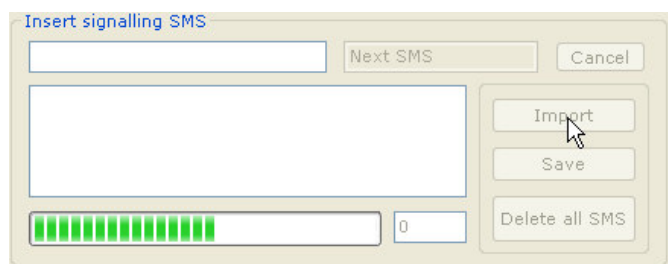
Pushing this button, you can save signalling SMS in SIM-CARD



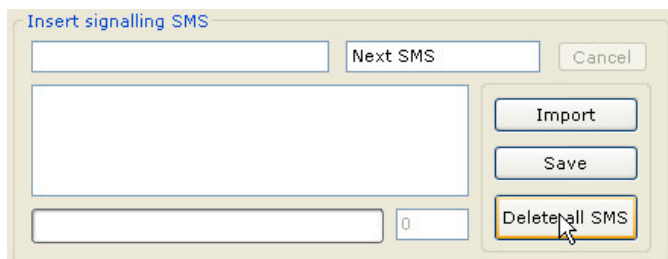
To properly configure the signalling SMS you have to insert signalling SMS n°1 first (associated to signalling input n°1), and after signalling SMS n°2 and so on. In order to properly insert signalling SMS, push cancel all SMS first.

Supposing to execute the insertion procedure for the first time, the steps to follow are:

1. Click on Imports

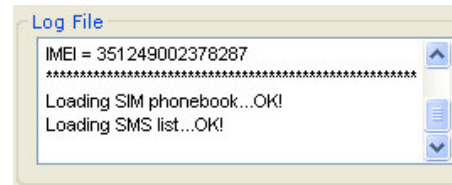


2. Click on Delete all SMS





3. Be sure there aren't SMS listed



4. Insert the first signalling SMS (number and text), and click save

5. Verify the correct signalling SMS insertion

n°	Number	Text	Memory
1	+393336490851	ALLARM1	STORED

6. Insert the second signalling SMS (number and text), and click save

7. Verify the correct signalling SMS insertion

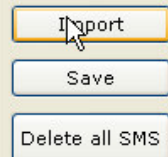
n°	Number	Text	Memory
1	+393336490851	ALLARM1	STORED
2	+393336490851	ALLARM2	STORED

Repeat the steps reported for signalling SMS n°3, n°4 and so on

## 3.3 How to modify a Signalling SMS

Follow the instruction reported below :

1. Click on import



2. Select SMS the signalling SMS you want to modify

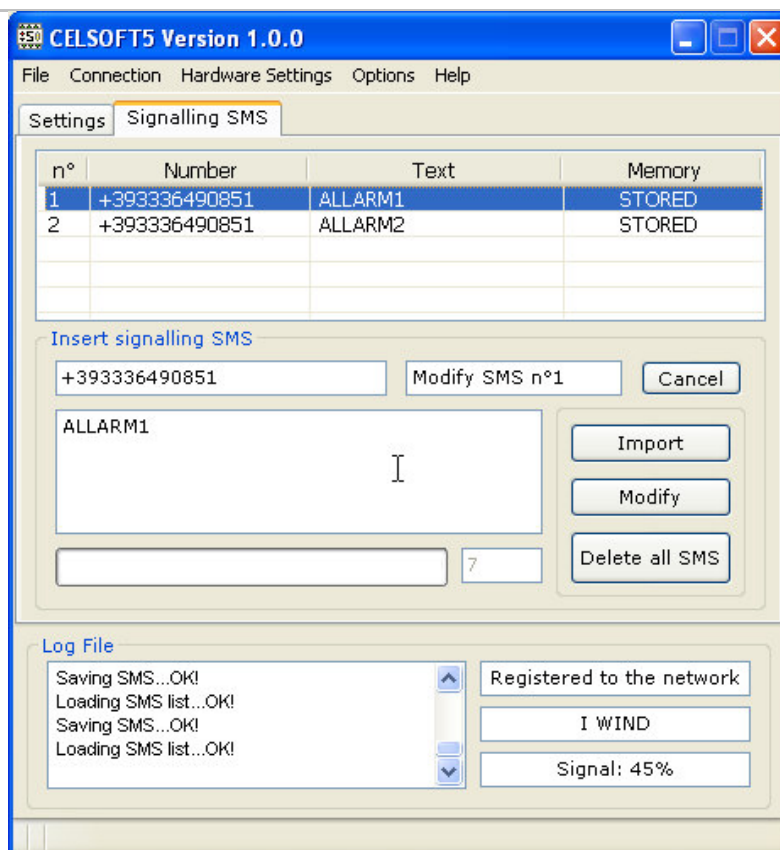
n°	Number	Text	Memory
1	+393336490851	ALLARM1	STORED
2	+393336490851	ALLARM2	STORED

3. change text or addressee number, or both

4. The window on the left of cancel button shows signalling SMS number you are modifying

5. The cancel button allows you exit from the signalling SMS modification procedure

6. The modify button in substitution the save button, allows you to save changes brought to a signalling SMS

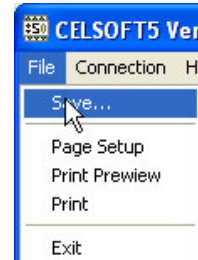


### 3.4 Save the settings

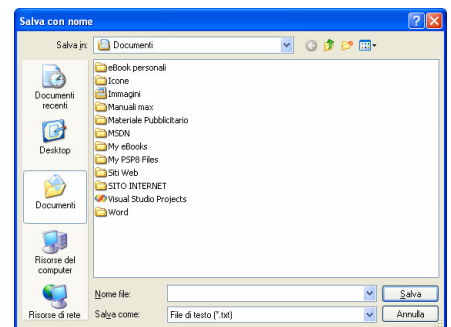
At the end of the configuration procedure (input and SMS configuration) you can save all the settings in a text file.

**WARNING!** Before preceding complete inputs and signalling SMS configuration procedure.

1. Select save in the menu file



2. Insert the file name where to store settings, click on save button

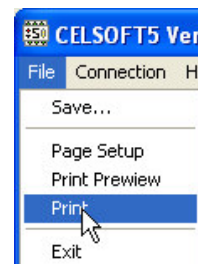


### 3.5 Print the settings

At the end of the configuration procedure (input and SMS configuration) you can print all the settings in a text file.

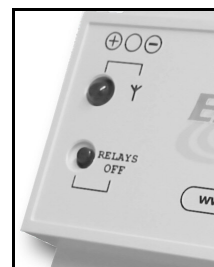
**WARNING!** Before preceding complete inputs and signalling SMS configuration procedure.

- Select print (or print preview) in the menu file



### 3.6 Parameter acquisition

- At the end of the programming procedure, it is necessary to store all the settings in the device EL35. 005. In order to this, push the Relays-Off push-button. Now the installation procedure is completed.

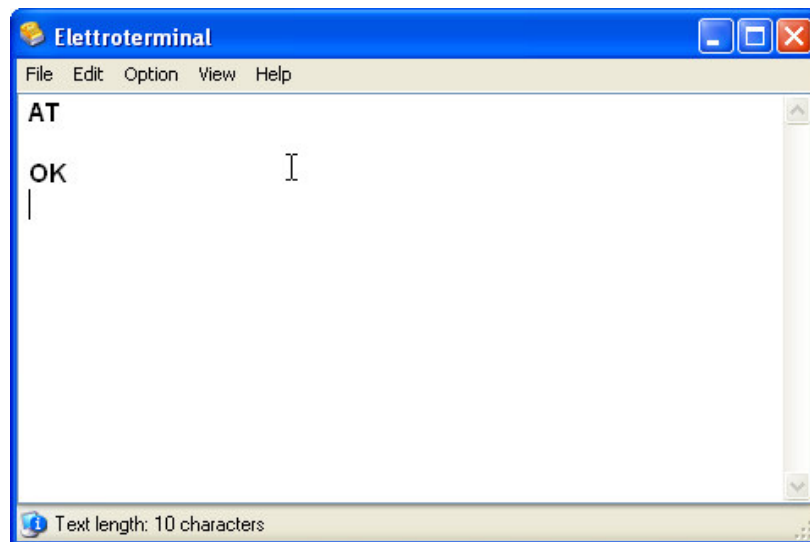


## 4. Elettroterminal

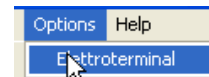
**WARNING!** Only qualified persons can use this program

Elettroterminal is an interface there allows to communicate with GSM modem through AT commands set

NOTE: to utilize AT command set is need to consult the manual of TC35i



- To start elettroterminal you have to select elettroterminal in menu Option



Using this software you can communicate, via AT Commands, with a device EL35. 005 connected to your computer.